

Certificate in Montessori Education

Internationally Accredited
by APROCS® - USA



In collaboration with
TPS
TRAININGS



Rationale: The Demand for Excellence In Early Years Education

The growth of Early Years Education sector in globally has created lucrative and promising career and business opportunities for Professionals Educators, and Educational Enterprenures. As part of a Visioanry Preschool Leadership, they are playing a significant role in the institutional growth and expansion, locally and globally. A well-versed educational professional turns up with his/her best when it comes to educational management, student's learning, teacher's competence and creating close school & home partnership. Preschool Leader's vision & experience ensures school's development & improvement. 21st Century Leaders need to work on 7Cs approach in order to create healthy and productive learning environment.

Professional Credentialing Program for Montessori Certification

This internationally accredited certification course is co-organized by MultiplyEd and TPS Trainings. MultiplyEd has partnered with QSi (USA) and APROCS (USA) under International Accreditation No. 2019-322 to commence much awaited yet Globally recognized USA-Awarded Educational Certification Program on school management.

This certification is a professional credentialing program that verifies an individual's ability to proficiently manage the education system. It certifies that the person has potential to lead with a level of competency. Top international education organization employers always prefer such candidates for hiring and career growth.



Certification Authorities - APROCS (USA) | QSi (Japan)

American Professional Certification Services (APROCS), and Quality System International (QSi) under the leadership of Prof. Dr. Shoji Shiba (Japan) and Dr. James Beatty (USA), is committed towards excellence in Continuous Professional Development in Education sector, and are the Certification Authorities of this International Certification in whole School Management in Pakistan and Aboard.

Certificate in Montessori Education



In collaboration with
TPS
TRAININGS

GLOBALLY RECOGNIZED CERTIFICATION IN PAKISTAN

The following **Body of Knowledge (BoK)** for **USA Certified Montessori Professional** is approved by American Professional Certification Body of APROCS-USA and Quality Systems International. The Certification has 12 applied modules pertaining to Early Years Montessori Education for Aspiring and Experience educators in Schools and Daycares Centers.



Module 01: Philosophy to Montessori Education

Module 02: First 1000 Days of in A Child's Life

Module 03: Exercises of Practical Life

Module 04: English Language

Module 05: Science and Sensorial

Module 06: Urdu Language - اُردو تدریس

Module 07: Arts and Crafts

Module 08: Fun with Mathematics

Module 09: Culture and Geography

Module 10: Jolly Phonics

Module 11: Storytelling for Character Building

Module 12: Early Year Assessment

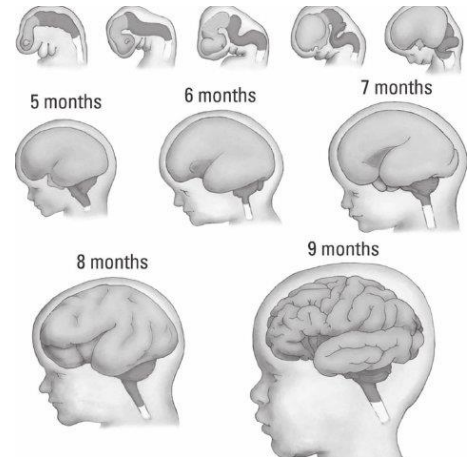
Module 01: Philosophy to Montessori Education

- Dr. Maria Montessori and Early Years
- Child's Brain development from prenatal stage
- Motor, Sensory and Cognitive Developments
- Characteristics of a Normalized child
- Sensitive Periods of a Child
- Planes of Development in Childhood
- Introduction: First 1000 Days of a Child's Life
- Introduction: Exercises of practical life (EPL)
- Introduction: English language
- تعارف: اردو زبان اور ابتدائے بچپن میں تدریس و سرگرمیاں
- Introduction: Arts and Crafts
- Introduction: Fun with Mathematics
- Introduction: Culture and Geography
- Introduction: Jolly Phonics
- Introduction: Storytelling for Character Building
- Introduction: Early Years Assessment



Module 02: First 1000 Days of in A Child's Life

- How 1st 1000 days of your child decides about his/her Future Life?
- The Brain | Antenatal Development of Brain
- A Baby's Brain and Brain Maturation
- What's so Critical about 0 - 2 years?
- 365 Days of baby's 1st, 2nd, and 3rd Years
- Avoiding Eating Problems
- Consequences of Neglect in first 3 Years of Life
- Child Development Tables
- Steps in Language Development
- Early Relationships – Attachment Styles
- Parenting Styles
- Typical Skills of Early Childhood
- Fathers and the Newborn
- 30 Million Word Gap
- School readiness in 1st 1000 Days
- Children with Learning Limitations



Module 03: Exercises of Practical Life

- What Exercises of practical life (EPL) are?
- Why EPL Direct and Indirect Aims
- Sensory Engagement with EPL
- Why is “Work Cycle” important in Early Years?
- Pincer Grasp
- 4 Main Groups of EPL
- Fine Motor Skill Development in Babies
- Grace & Courtesy
- Control of Movement in Early Years
- To be a good mother/father/teacher
- About healthy and productive life style
- EPL Activities with Multi-age group
- Mastery with EPL Montessori equipment



Module 04: English Language

- What is Language and Language Competencies
- Pre-Listening, While Listening and Post Listening Ideas
- Speech Stages | 02 – 05 Years
- Concepts of sound and Alphabets
- CPA approach for Early Years
- IRPA Activities for Early Years
- From Words to Sentence
- Working with Digraphs, Trigraphs and Grapheme
- Reading Skill | Photo Memory to Phonics
- Phonological Awareness
- Word Series | Pink, Blue, Green
- Words building with CVC and CVCC
- Phrase building with CVC and CVCC
- Sentence building with CVC and CVCC
- The Writing Skill with Tripod Fingers
- Pre-writing Activities
- Controlled Writing
- Basic and Advance Grammar Symbols
- Language Activities with Multi-age group
- Mastery with Language Montessori equipment



Module 05: Science and Sensorial

- Main areas of Science and Sensorial
- TPL - Three Period Lesson Approach
- Sensorial exercises groups
- Exercises of Development of Visual Sense
- Chromatic Sense
- Three stage learning
- 09 Exercises of Senses Development
- Stages of Sensory and Intellectual Development
- 03 groups of Science skills
- Chromatography
- Life Sciences at Preschool level
- Working with EPL Montessori Activities
- EPL Activities with Multi-age group
- Mastery with EPL equipment



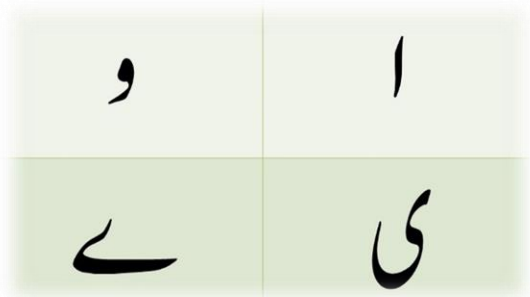
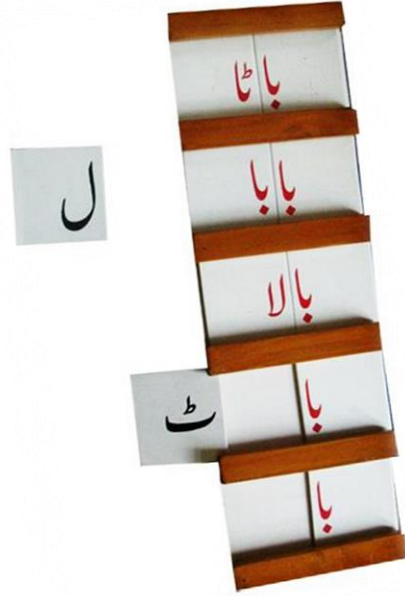
Module 06: Arts and Crafts

- Contents of teaching of arts in Early Years
- Skills foster art, creativity and imagination
- methods to teach art in preschool
- Developmental Benefits of Arts
- Art Appreciation and Art Ideas
- Basic Skills of Arts and Crafts
- Elements of Early years Art
- Forms of Early years Art
- Media for Early years Art
- Themed Art Projects
- Natural Material as creative Arts
- Sensorial Curriculum with Arts
- Stages of Art in Early Years
- Art work with waste material
- How to Teach Arts
- Integration of Art with different Subjects
- Assessing the creative abilities of young learners



Module 07: Urdu Language - اُردو تدریس

- اردو زبان اور اسکے تدریس کے مقاصد
- زبان کی تعریف اور صورتیں اور مہارتیں
- ابتدائے بچپن کی تعلیم میں تدریس اردو
- طریقہ تدریس | الف بائی، صوتی، تصویری
- اردو زبان کی آوازیں | مصمتیں اور مصوتیں
- گفت و شنید کی سرگرمیاں
- ابتدائی جماعتوں میں پڑھائی
- سہ مرحلہ سبق
- گروہی سرگرمیاں
- اشیاء کے ڈبے کی مدد سے سہ مرحلہ سبق
- حروف کی اقسام
- واو، می، ے کا استعمال
- مجھول، معروف، لین کی آوازیں
- کلیدی حروف
- آٹھ بنیادی مسائل کی نشاندہی
- تحریری مواد یا لوازمات سے آشنائی
- تحریری مہارت | عمر اٹھارہ ماہ سے تین سال
- ہاتھ کے پٹھوں کی تیاری
- حروف مُصَوِّتے اور حروف مُصَوِّتے
- اردو حروف کی بنیادی اشکال
- حروف کا جوڑ توڑ
- لکھائی کے اعتبار سے اردو حروفِ تہجی
- دائروی حروف کی خاصیت
- حروفِ تہجی سے الفاظ بنانا
- چاروں مہارتوں کی نشوونما سے تخلیق نگاری



Module 08: Fun with Mathematics

- How children learn mathematics at Early Years
- Main Areas of Early Years Mathematics Curriculum
- The Concept of Number and Zero
- Numbers & Numerals
- Teen & Tens Boards
- Introducing Arithmetical Operations
- Introducing Decimal System
- 06 Mathematics Groups in Montessori
- Association of Beads and Cards
- Addition with Bead Bars and Number Rods
- Subtraction with Bead Bars and Number Rods
- Multiplication with Golden Beads
- Stamp Game - Addition
- Addition with Addition Board
- Subtraction with Subtraction Board
- Multiplication with Multiplication Board
- Division with Division Board
- Introducing concept Time and currencies
- Extended Activities
- Math Activities with Multi-age group
- Mastery with Math Montessori equipment



Module 09: Culture and Geography

- The Geography of Breakfast
- Introducing Geography in Montessori
- Introducing Culture in Montessori
- Cosmic Education and Cultural Curriculum
- Montessori Curriculum of Geography & Culture
- Cultural Geography
- Political Geography
- Economic Geography
- Physical Geography | Exercises and Nomenclature
- Exploring World Landmarks
- Geography Learning Experience in Montessori
- Festivals, Events and Celebrations
- Culture and Geography Activities with Multi-age group
- Mastery with Montessori equipment



Module 10: Jolly Phonics

- Teaching Phonics at Early Years
- Does it work for every child?
- When should we start Jolly Phonics
- 07 Sets of Jolly Phonics
- Alphabets with Phonics
- Consonants / Vowels with Phonics
- Why to teach first
- Types of Learners
- Steps to Teach Sound
- Phonics Sounds and Practice
- Word Building
- Blending and Segmenting
- Phonemes
- Graphemes
- Teaching Strategies
- Word Families
- Vowel Digraphs
- Split Digraphs | Long Vowels
- Vowel Digraphs
- Learning Through Alliteration



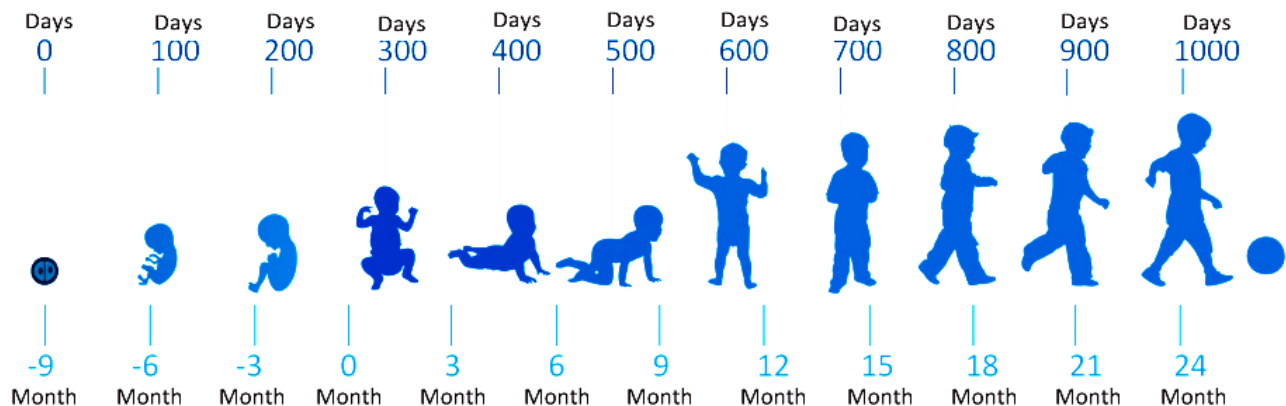
Module 11: Storytelling for Character Building | داستان گوئی سے کردار سازی

- کہانی سنانے کا فن
- بامقصد کہانیوں سے بچوں نے کیا سیکھا
- بچوں کی زندگی پر کہانیوں کے دور رس اثرات
- کہانیوں کے مقاصد
- کہانی سنانے کے ضروری عناصر
- کہانی کا انتخاب
- کہانی کیسے سنائیں؟
- کہانی سنانے کی منصوبہ بندی
- سمعی و بصری معاونات کا استعمال



Module 12: Early Year Assessment

- Assessment and Evaluation in Early Years
- Concept of Measurement and Assessment
- 04 Components of Assessment in Montessori
- Learning Domains in a preschooler
- Level of Cognitive Development | Bloom's Taxonomy
- Types of Assessments
- Assessments FOR Learning
- Assessments OF Learning
- Assessments AS Learning
- Key Considerations for Early Years Assessment
- Assessing the developmental delays at Early Years
- Sensitive Periods
- Baseline Assessment at Early Years
- Evaluating Mastery in Early Years
- Characteristics of Montessori Continuous Assessment
- Learning-centric Montessori Assessment
- Early Years' Everyday Observations
- Assumptions in Assessment
- Observation Checklist and Anecdotal Records
- Learners Data Folders



Certificate in Montessori Education



In collaboration with
TPS
TRAININGS

WHO SHOULD ATTEND?

NEW TEACHER | Seeking Excellent Educational Career

MOTHER | Interested in Homeschooling Kids

IN-SERVICE TEACHER | Interested to expand their Preschool system

PRINCIPAL | Want to Transform their Preschools

ENTREPRENEUR | Launching School with high Return-on-Investment

Qualification Criteria

- Attendance and Punctuality: 100%
 - Certification Course Work: 60%
 - Final Examination: 70%
- Assignment: 20%
 - Modular Assessments: 20%
 - Classroom Participation: 10%
 - Group/Solo Presentation: 10%

Enrolment & Payment

Enrolment will be confirmed after submitting the Registration form and course fee.

Certificate will be awarded at the submission of total fee clearance and as per the above stated Qualification Criteria.

Contact

Training Executive

+92 308 888 22 03 | +92 42 351 23455 | +92 301 431 5551

TPS Trainings: Sector C-1, Block -2, Township, Lahore

MultiplyEd: 234 ETD Main Canal, Lahore | STP Building-03 Islamabad

USA: 539 W Commerce St #1515 Dallas, USA

Email: operations@MultiplyEd.com | Web: www.MultiplyEd.com

Email: info@TPStrainings.com | Web: www.TPStrainings.com

